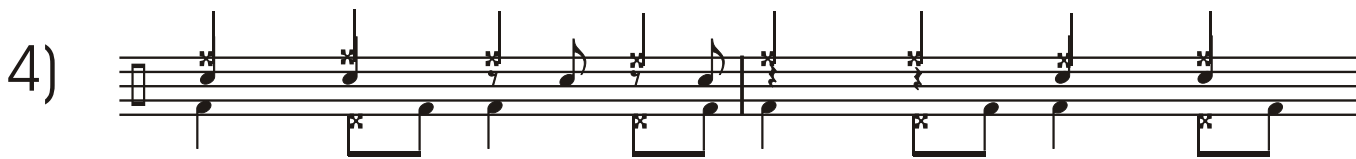
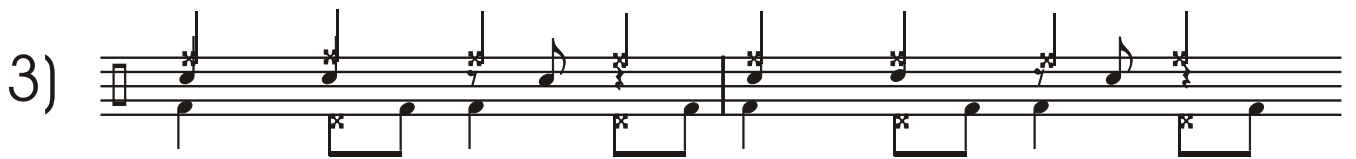
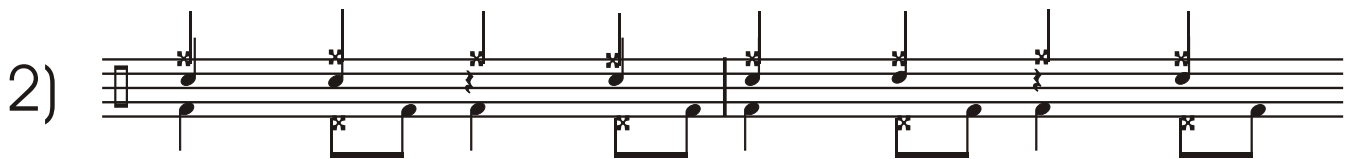


SAMBA



5)  Musical notation for exercise 5, consisting of two staves. The upper staff contains a sequence of notes: G4, A4, B4, C5, B4, A4, G4, F4, E4. The lower staff contains a sequence of notes: C4, D4, E4, F4, G4, A4, B4, C5, B4, A4, G4, F4, E4. The notes are connected by stems and beams, with some notes having accidentals (sharps and naturals).

6)  Musical notation for exercise 6, consisting of two staves. The upper staff contains a sequence of notes: G4, A4, B4, C5, B4, A4, G4, F4, E4. The lower staff contains a sequence of notes: C4, D4, E4, F4, G4, A4, B4, C5, B4, A4, G4, F4, E4. The notes are connected by stems and beams, with some notes having accidentals (sharps and naturals).

7)  Musical notation for exercise 7, consisting of two staves. The upper staff contains a sequence of notes: G4, A4, B4, C5, B4, A4, G4, F4, E4. The lower staff contains a sequence of notes: C4, D4, E4, F4, G4, A4, B4, C5, B4, A4, G4, F4, E4. The notes are connected by stems and beams, with some notes having accidentals (sharps and naturals).


8)  Musical notation for exercise 8, consisting of two staves. The upper staff contains a sequence of notes: G4, A4, B4, C5, B4, A4, G4, F4, E4. The lower staff contains a sequence of notes: C4, D4, E4, F4, G4, A4, B4, C5, B4, A4, G4, F4, E4. The notes are connected by stems and beams, with some notes having accidentals (sharps and naturals).

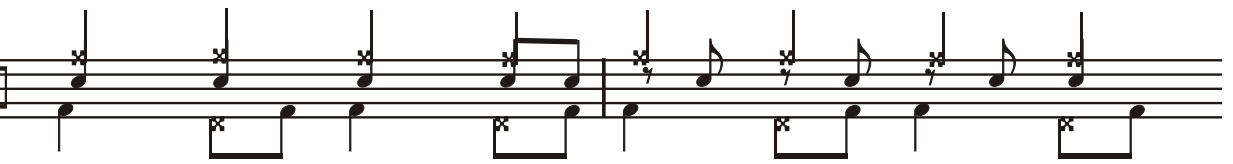
9)  Musical notation for exercise 9, consisting of two staves. The upper staff contains a sequence of notes: G4, A4, B4, C5, B4, A4, G4, F4, E4. The lower staff contains a sequence of notes: C4, D4, E4, F4, G4, A4, B4, C5, B4, A4, G4, F4, E4. The notes are connected by stems and beams, with some notes having accidentals (sharps and naturals).


10)  Musical notation for exercise 10, consisting of two staves. The upper staff contains a sequence of notes: G4, A4, B4, C5, B4, A4, G4, F4, E4. The lower staff contains a sequence of notes: C4, D4, E4, F4, G4, A4, B4, C5, B4, A4, G4, F4, E4. The notes are connected by stems and beams, with some notes having accidentals (sharps and naturals).


11)  Musical notation for exercise 11, consisting of two staves. The upper staff contains a sequence of notes: G4, A4, B4, C5, B4, A4, G4, F4, E4. The lower staff contains a sequence of notes: C4, D4, E4, F4, G4, A4, B4, C5, B4, A4, G4, F4, E4. The notes are connected by stems and beams, with some notes having accidentals (sharps and naturals).


12)  Musical notation for exercise 12, consisting of two staves. The upper staff contains a sequence of notes: G4, A4, B4, C5, B4, A4, G4, F4, E4. The lower staff contains a sequence of notes: C4, D4, E4, F4, G4, A4, B4, C5, B4, A4, G4, F4, E4. The notes are connected by stems and beams, with some notes having accidentals (sharps and naturals).


13)  Musical notation for exercise 13, featuring a treble clef, a key signature of one flat, and a 2/4 time signature. The exercise consists of two staves: the upper staff contains a sequence of eighth notes with various accidentals, and the lower staff contains a sequence of eighth notes with 'x' marks above them, indicating natural harmonics.


14)  Musical notation for exercise 14, featuring a treble clef, a key signature of one flat, and a 2/4 time signature. The exercise consists of two staves: the upper staff contains a sequence of eighth notes with various accidentals, and the lower staff contains a sequence of eighth notes with 'x' marks above them, indicating natural harmonics.


15)  Musical notation for exercise 15, featuring a treble clef, a key signature of one flat, and a 2/4 time signature. The exercise consists of two staves: the upper staff contains a sequence of eighth notes with various accidentals, and the lower staff contains a sequence of eighth notes with 'x' marks above them, indicating natural harmonics.


16)  Musical notation for exercise 16, featuring a treble clef, a key signature of one flat, and a 2/4 time signature. The exercise consists of two staves: the upper staff contains a sequence of eighth notes with various accidentals, and the lower staff contains a sequence of eighth notes with 'x' marks above them, indicating natural harmonics.

17)  Musical notation for exercise 17, featuring a treble clef, a key signature of one flat, and a 2/4 time signature. The exercise consists of two staves: the upper staff contains a sequence of eighth notes with various accidentals, and the lower staff contains a sequence of eighth notes with 'x' marks above them, indicating natural harmonics.

18)  Musical notation for exercise 18, featuring a treble clef, a key signature of one flat, and a 2/4 time signature. The exercise consists of two staves: the upper staff contains a sequence of eighth notes with various accidentals, and the lower staff contains a sequence of eighth notes with 'x' marks above them, indicating natural harmonics.

19)  Musical notation for exercise 19, featuring a treble clef, a key signature of one flat, and a 2/4 time signature. The exercise consists of two staves: the upper staff contains a sequence of eighth notes with various accidentals, and the lower staff contains a sequence of eighth notes with 'x' marks above them, indicating natural harmonics.

20)  Musical notation for exercise 20, featuring a treble clef, a key signature of one flat, and a 2/4 time signature. The exercise consists of two staves: the upper staff contains a sequence of eighth notes with various accidentals, and the lower staff contains a sequence of eighth notes with 'x' marks above them, indicating natural harmonics.

21)  Musical notation for exercise 21, featuring a treble clef, a key signature of one flat, and a 2/4 time signature. The exercise consists of two staves: the upper staff contains a sequence of eighth notes with various accidentals, and the lower staff contains a sequence of eighth notes with 'x' marks above them, indicating natural harmonics.